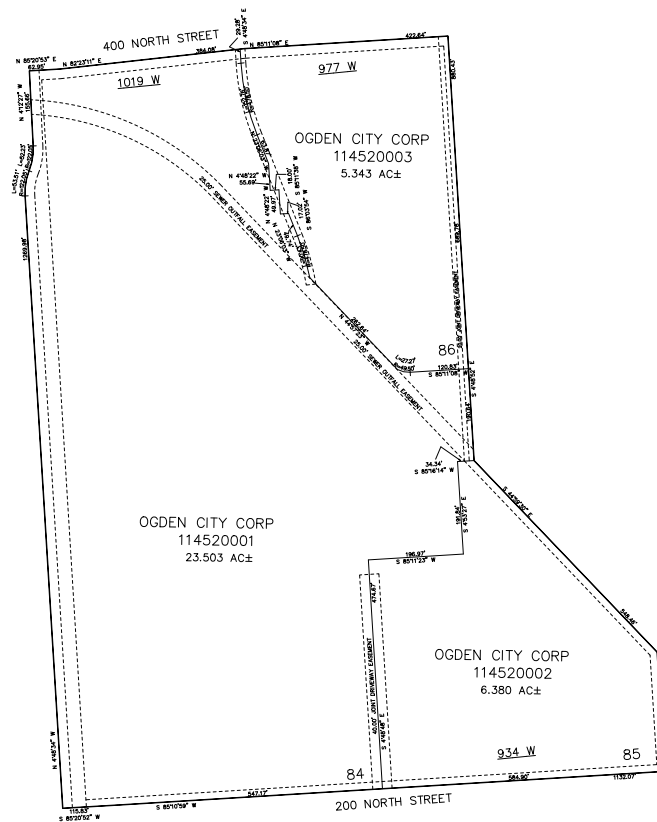


PART OF THE N. 1/2, OF SECTION 7, T.6N., R.1W., S.L.B. & M.
BUSINESS DEPOT OGDEN PLAT 18 2ND AMENDMENT

TAXING UNIT: 25

IN OGDEN CITY
SCALE 1" = 200'

SEE PAGE 418



SEE PAGE 418

SEE PAGE 418

SEE PAGE 418

10' UTILITY & DRAINAGE EASEMENTS EACH
SIDE OF PROPERTY LINES AS INDICATED
BY DASHED LINES EXCEPT AS OTHERWISE
SHOWN.

FOR COMPLETE SURVEY DATA SEE
ORIGINAL DEDICATION PLAT IN
BOOK 93, PAGE 100 OF RECORDS.